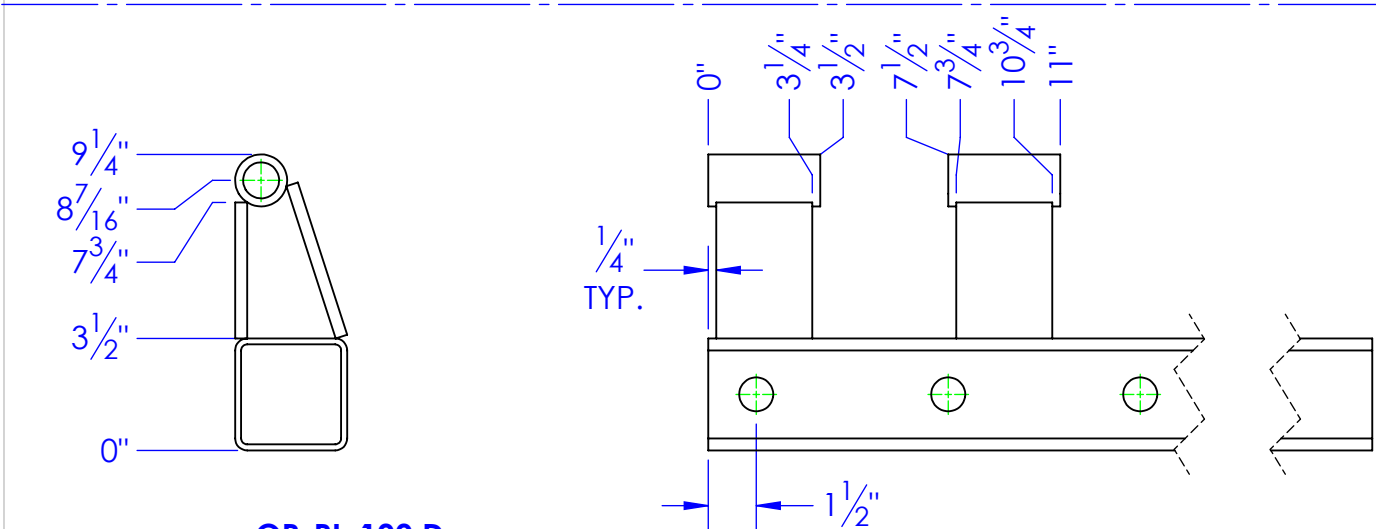
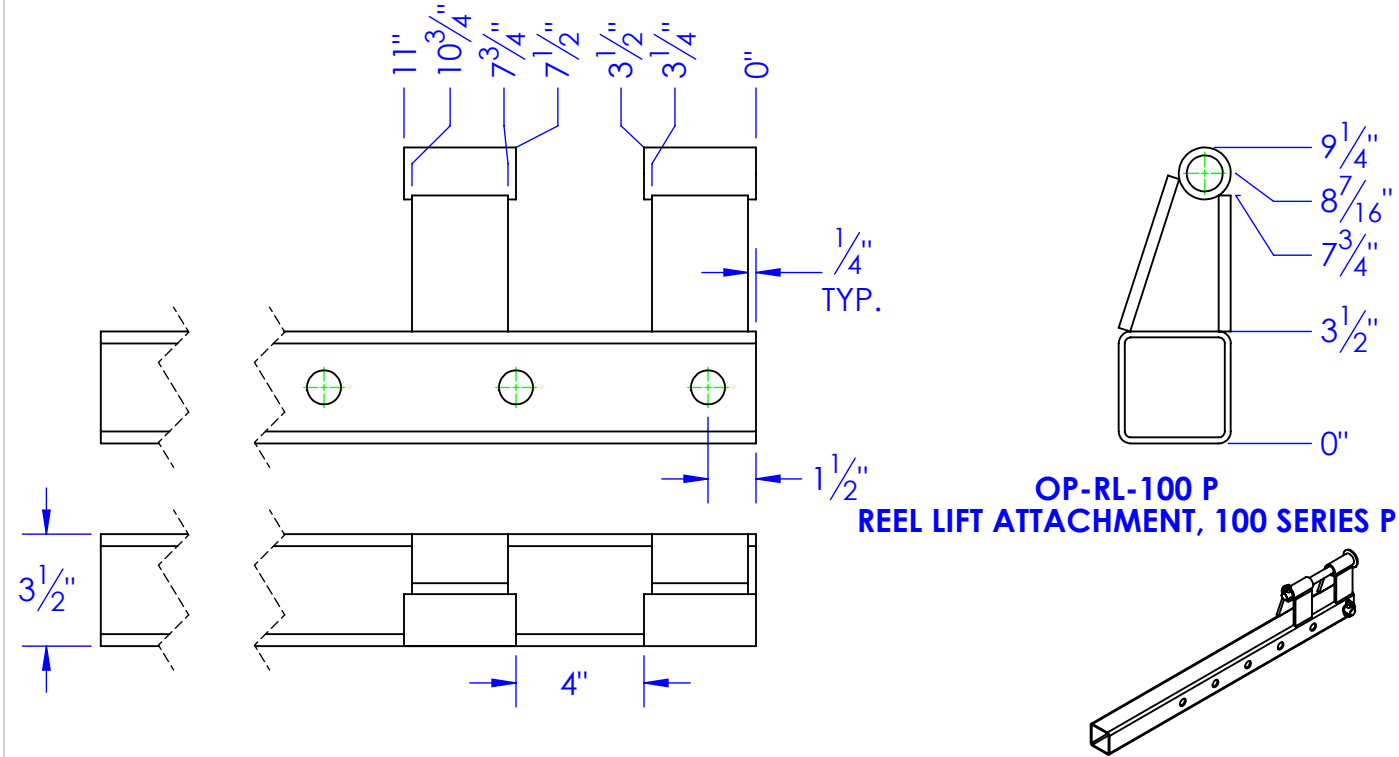
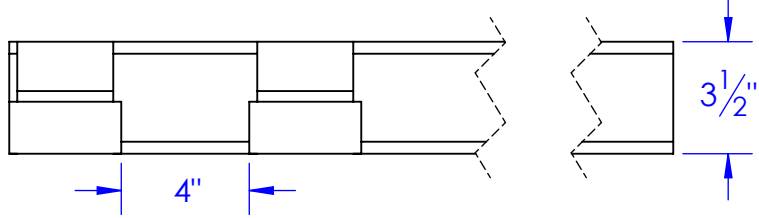
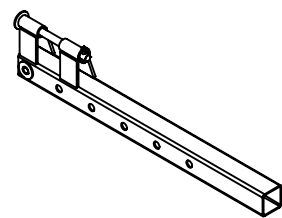


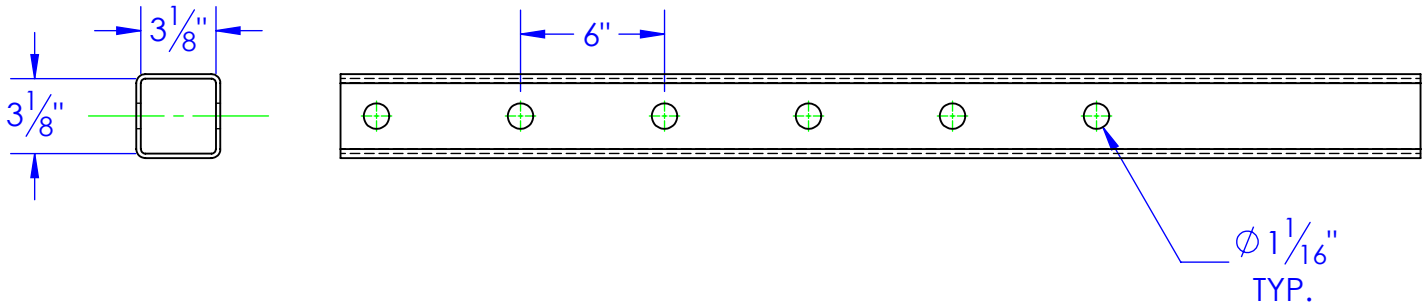
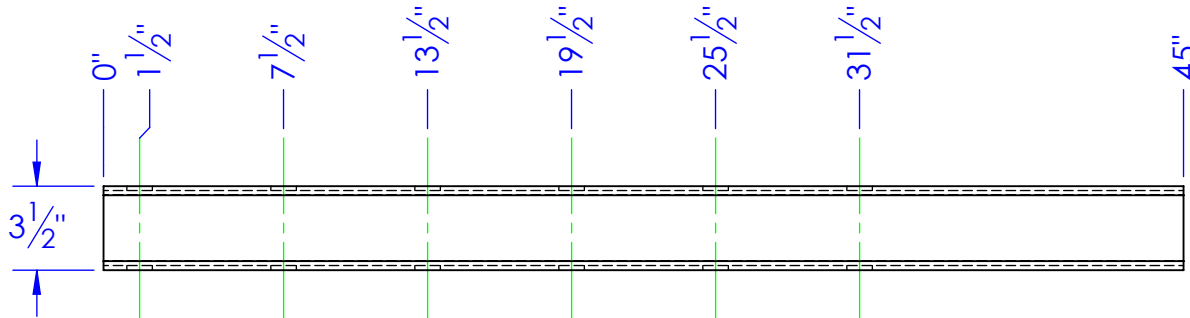
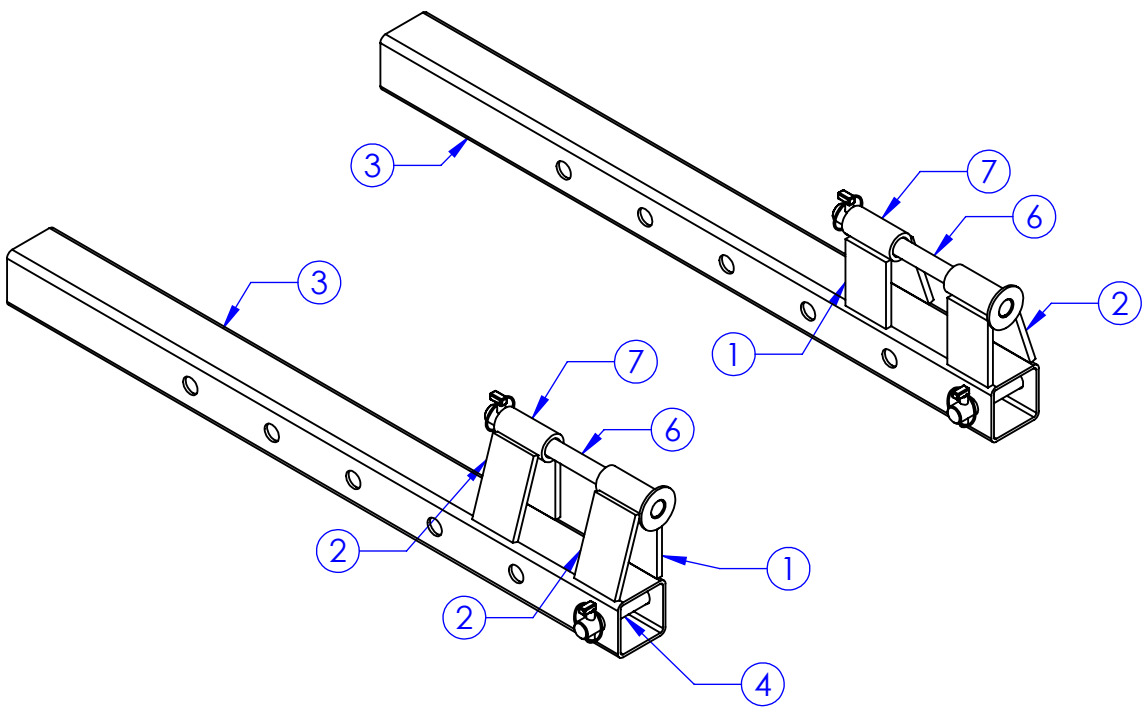
ITEM NO.	PART NUMBER	DESCRIPTION	DRAWING #	QTY.
1	FI .375 x 3 L 4.25	LENGTH: 4-1/4"	STOCK	4
2	FI .375 x 3 L 5	LENGTH: 5"	STOCK	4
3	ST-3.5x3.5x.1875 L 45	LENGTH: 45"	STOCK	2
4	RE-PN-C1x475	PIN, CON, 4-7/8"	10-1707	2
6	RE-PN-C1X1225	PIN, CONNECTING 12-1/4"	10-1707	2
7	ST-MT 1.625 x 1.125 L 3.5	LENGTH:3-1/2"	STOCK	4



OP-RL-100 D
REEL LIFT ATTACHMENT, 100 SERIES DRIVER



REV.	REVISIONS	DATE	APPROVED
	DESCRIPTION		
A	NEW STANDARD DWG FROM RL100	7/23/2012	



PROPRIETARY AND CONFIDENTIAL
THE INFORMATION CONTAINED IN THIS DRAWING IS THE SOLE PROPERTY OF <INSERT COMPANY NAME HERE>. ANY REPRODUCTION IN PART OR AS A WHOLE WITHOUT THE WRITTEN PERMISSION OF <INSERT COMPANY NAME HERE> IS PROHIBITED.

UNLESS OTHERWISE SPECIFIED:

DIMENSIONS ARE IN INCHES
TOLERANCES:
FRACTIONAL $\pm 1/16$
ANGULAR: MACH ± 1 BEND \pm
TWO PLACE DECIMAL ± 0.10
THREE PLACE DECIMAL ± 0.005

MATERIAL

DO NOT SCALE DRAWING

DRAWN	NAME	DATE	P.O. BOX 248, SABETHA KS. 66534 (785) 284-3674 FAX (785) 284-3931	
PART #	HEATH	7/23/2012	TRIPLE C INC.	
ASM #	OP-RL-100			
COMMENTS:			SIZE	DWG. NO.
REEL LIFT ASSY 100 SERIES			B	90-1315
			SCALE: 1:10	WEIGHT: 84.21
			SHEET 1 OF 1	REV A